

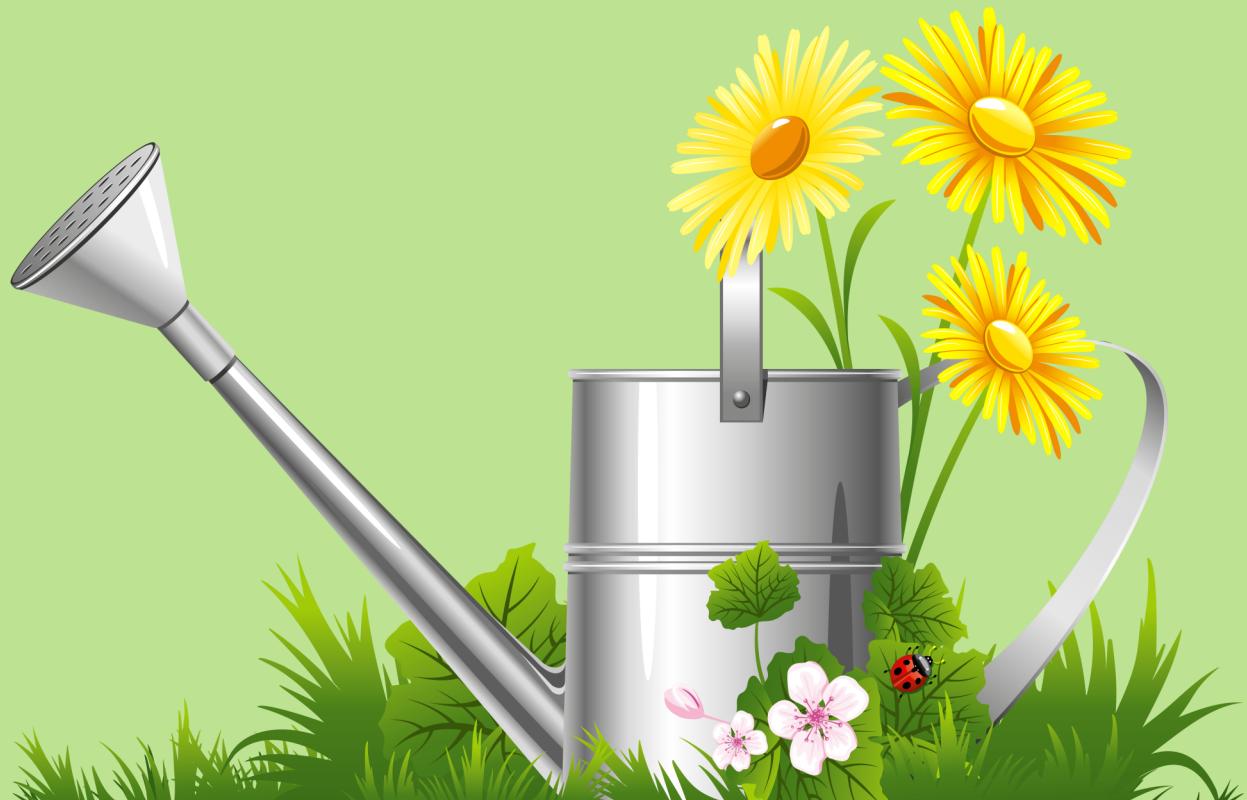
# Gulf Coast Jack Russell Terrier Network

## April 7 & 8, 2018 Playday

# SPRING



### The Wallwin Farm \* Buffalo, TX \* 9:00AM



**\$15.00 Per Day/\$30.00 Weekend**

# DIRECTIONS TO THE WALLWIN FARM

**6864 CR 359**

**Buffalo, TX 75831 (281) 467-7853**

## Directions from Houston

I-45 North - Exit #164 Centerville Hwy 7

**Go left over the freeway**

Go right at the feeder road directly before Woody's/Shell gas station. Follow the feeder road for approximately 8 miles to the stop sign. At the stop sign go left (I will post signs along the way); you will be turning onto a **\*\*\*blacktop road that will become a white rock road after about a 1/3 of mile.**

\*Go approx. 1/2 mile to the first road on the right. This is County Road 358 (CR 358). You will see a Welcome to Dogwood Trails sign after you turn onto this road. Continue for approximately 7/10 of a mile to where the road merges with another road from the left. Go to the right and we are on the right approximately 4/10 of a mile on the right...there will be a sign.

## Directions from Dallas

I-45 South to Buffalo - Exit Hwy US 79.

Turn right at the light and then turn **IMMEDIATELY** left onto the feeder road next to the Exxon. Follow the feeder road approximately 7 miles. Turn right at the stop sign; you will be turning onto a **\*\*\*blacktop road that will become a white rock road after about 1/3 of a mile down.**

See \* above for the rest of the directions.

PLEASE CALL IF YOU ARE NOT SURE ABOUT WEATHER CONDITIONS!!

Playday Host: Jean Wallwin's Cell Phone #: 281-467-5873

Motels and RV Parks (for those who will stay Saturday night):

America's Best Value Inn, Buffalo, TX (ask for Chad) – 903-322-4202

La Quinta Inn - Fairfield, TX - 903-389-7441

*Pet fee may be incurred, so call ahead*

Horseshoe RV Park – Buffalo- 903-322-4537

“THINGS TO BRING “

**Bring A SIDE DISH or DESSERT for Saturday lunch/dinner**

APPROXIMATELY 10 MILES TO CLOSEST STORE

COME PREPARED WITH YOUR OWN ADULT BEVERAGES!

\* CHAIRS

\* COOLER WITH DRINKS (BOTTLED WATER WILL BE PROVIDED)

\* WATER BOWL AND WATER FOR YOUR DOGS

\* REGULAR TRIAL AND PLAYDAY GEAR

\* ADULT BEVERAGES – CENTERVILLE IS IN A DRY COUNTY

\* BEER AND WINE CAN BE PURCHASED IN BUFFALO

IF THIS IS YOUR FIRST PLAYDAY PLEASE

REFER TO THE “NEW TO PLAYDAYS & TRIALS” TAB ON OUR

WEBSITE [www.gcjrtm.com](http://www.gcjrtm.com)

YOUR HELP WITH SET-UP ON FRIDAY AFTERNOON AND TAKE DOWN ON SUNDAY

AFTERNOON WOULD BE GREATLY APPRECIATED!!

PLEASE NOTE – If you need additional playday information or have any questions,

Please Contact: Jean Wallwin at [jwallwin@hotmail.com](mailto:jwallwin@hotmail.com)

UPDATES ALSO POSTED ON CLUB [FACEBOOK](#) PAGE

New Members contact Lisa Dernick @ [lisadernick@comcast.net](mailto:lisadernick@comcast.net)